



# HP's Adaptive Network Architecture

## Overview

**Holger Rank**  
**HP Services**  
**ANA EMEA Sales**

**[holger.rank@hp.com](mailto:holger.rank@hp.com)**

© 2004 Hewlett-Packard Development Company, L.P.  
The information contained herein is subject to change without notice



# Agenda

## Adaptive Network Architecture Overview

- Brief Overview
- Practical Example
- Security Impact
- Benefits & References
- Summary

# ANA Brief Overview



# What is ANA?

## HP's Adaptive Network Architecture (ANA)

- is a **solution**
- **structures** the complete IT infrastructure
- implements **business** and **security** needs
- manages **IT wide compartment's**
- provides a **geographic independence**
- presents the IT in a **virtualized view.**

# The components of ANA

- ANA structures networks into 'Compartments'
- ANA connects 'Compartments' using a 'Virtual Backbone'
- ANA controls access thru 'Policy Enforcement Points'
- ANA is using a central 'Policy Management System'
- ANA leverages your existing IT-, LAN- and WAN-Infrastructure

# What do you get from ANA

HP's ANA perform:

- fast alignment of **business needs** and IT infrastructure
- a **rapid** to implement and **changeable** IT Infrastructure with a very **short Time to Market**
- a **cost optimized** IT with a strong **cost saving** factor for future extensions.
- a **secure** and **auditable** IT wide infrastructure
- an **easy centralized management**

# ANA Practical Example



# Corporate Network Today!



**Headquarter Hamburg  
Germany**

Supplier

Dealer

Dealer

Supplier



**Lyon  
France**

Production

**Office USA**

**WAN**

Production

Supplier

Dealer

Supplier

Dealer

Production

Supplier

Production

Dealer

Production

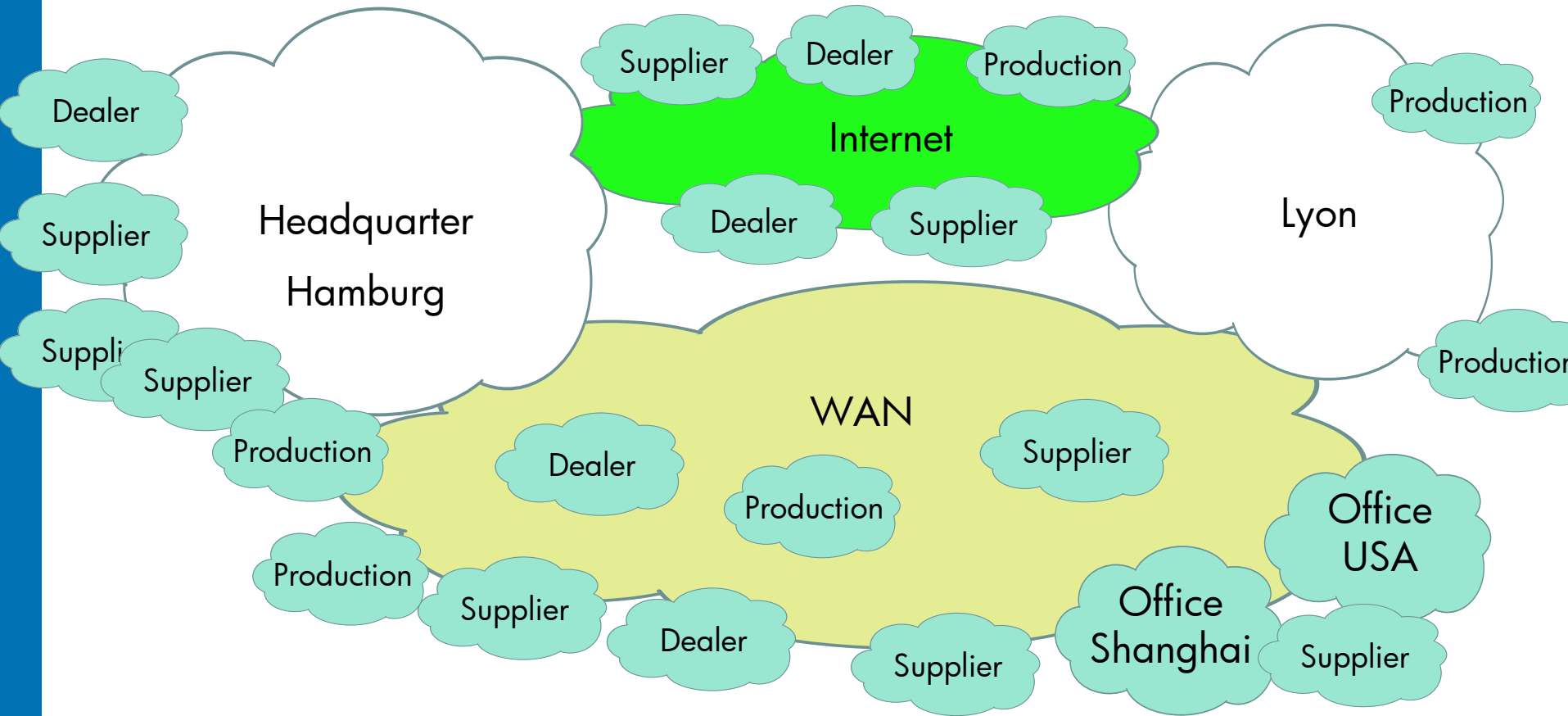
Dealer

**Office Shanghai**

Supplier



# Today Network – before ANA



# ANA – Step 1



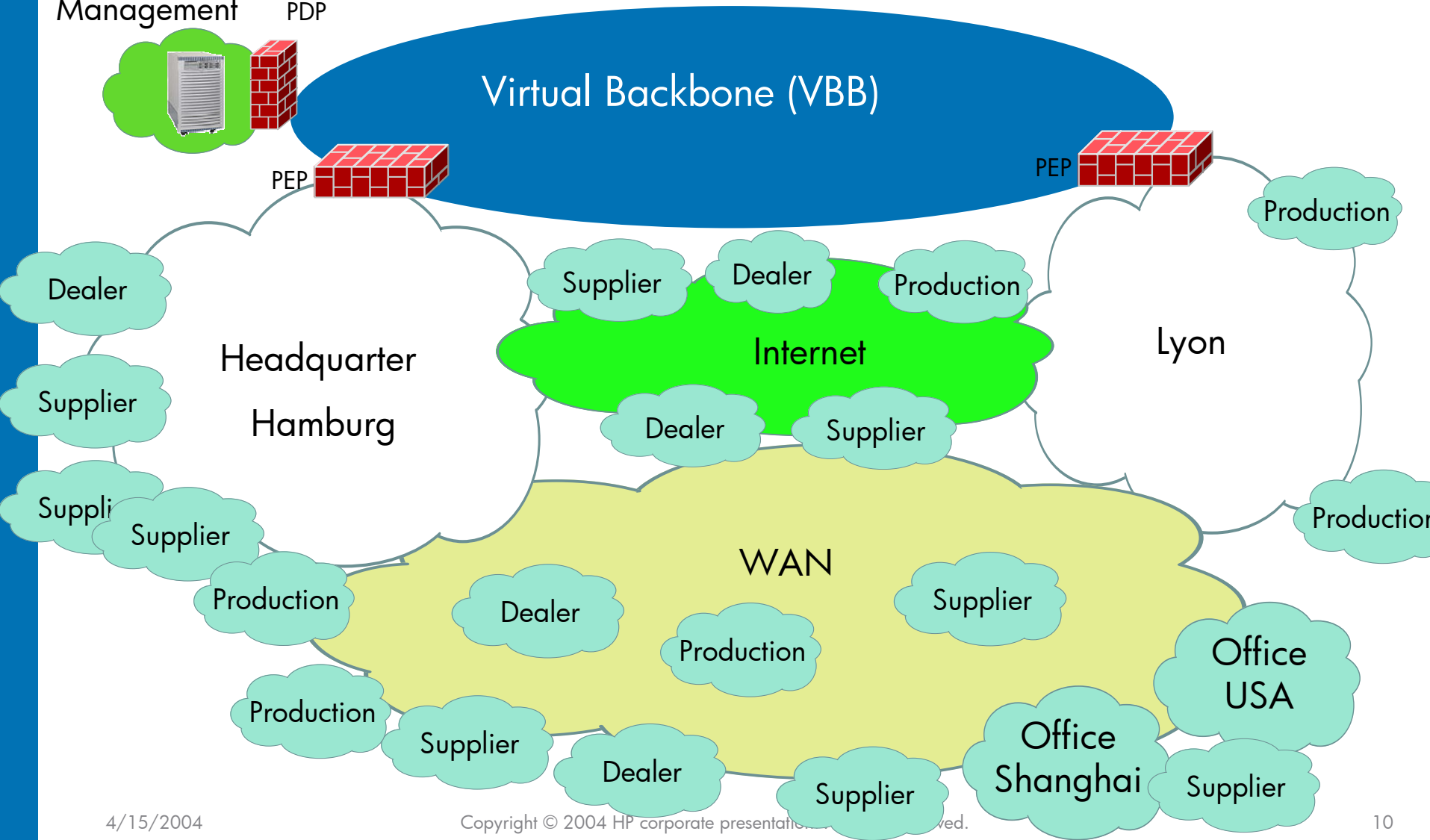
Central Policy  
Management

PDP

Virtual Backbone (VBB)

PEP

PEP



# ANA – Step 2



Central Policy  
Management

PDP

VBB

PEP

PEP

Internet

Headquarter  
Hamburg

Lyon

WAN

Office  
USA

Office  
Shanghai

Dealer

Supplier

Supplier

Supplier

Production

Production

Supplier

Dealer

Production

Dealer

Supplier

Supplier

Supplier

Production

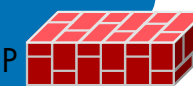
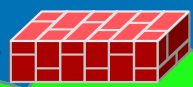
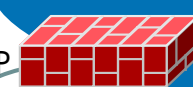
Production

Dealer

Supplier

Dealer

Supplier



# ANA – Step 3



Central Policy Management

**New Production System compartment**

**New Supplier compartment**

**New Production compartment**

**New Dealer compartment**

VBB

Internet

WAN

Headquarter  
Hamburg

Lyon

Office  
USA

Office  
Shanghai

Dealer

Supplier

Supplier

Supplier

Production

Production

Supplier

Dealer

Supplier

Production

Dealer

Supplier

Supplier

Dealer

Supplier

Dealer

Production

Production

PDP

PEP

PEP

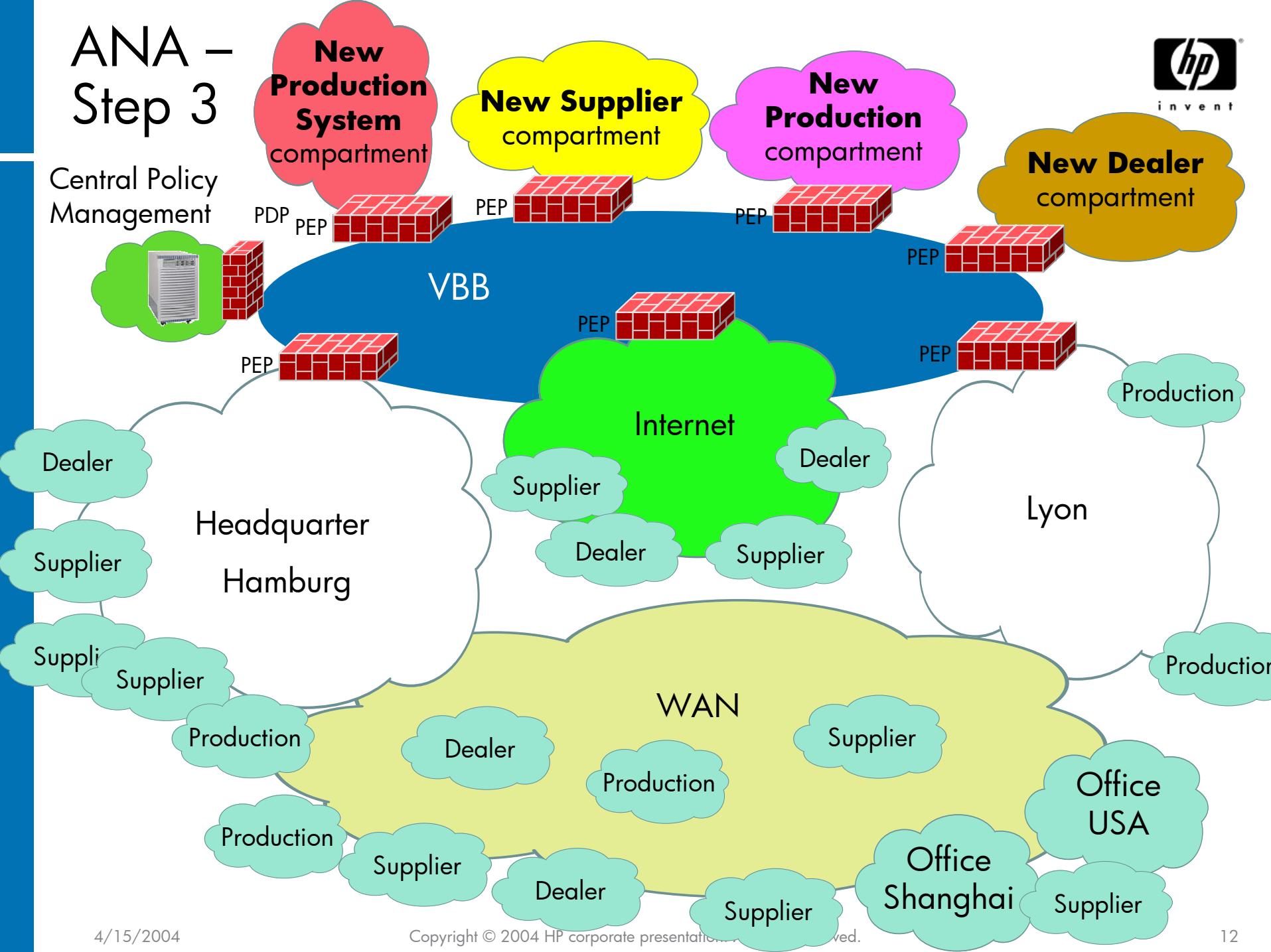
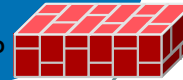
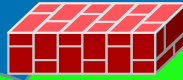
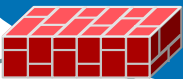
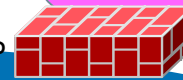
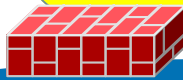
PEP

PEP

PEP

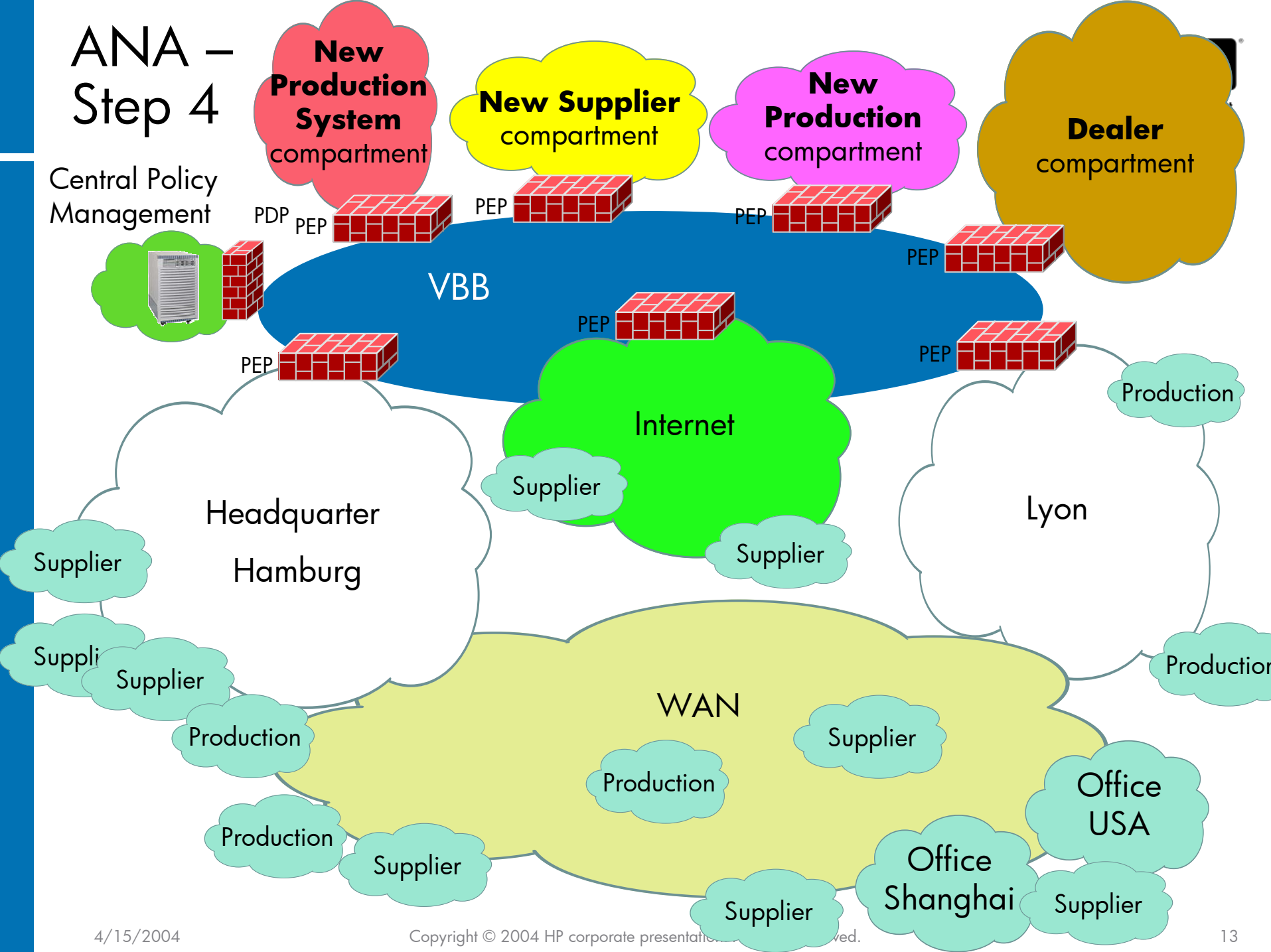
PEP

PEP



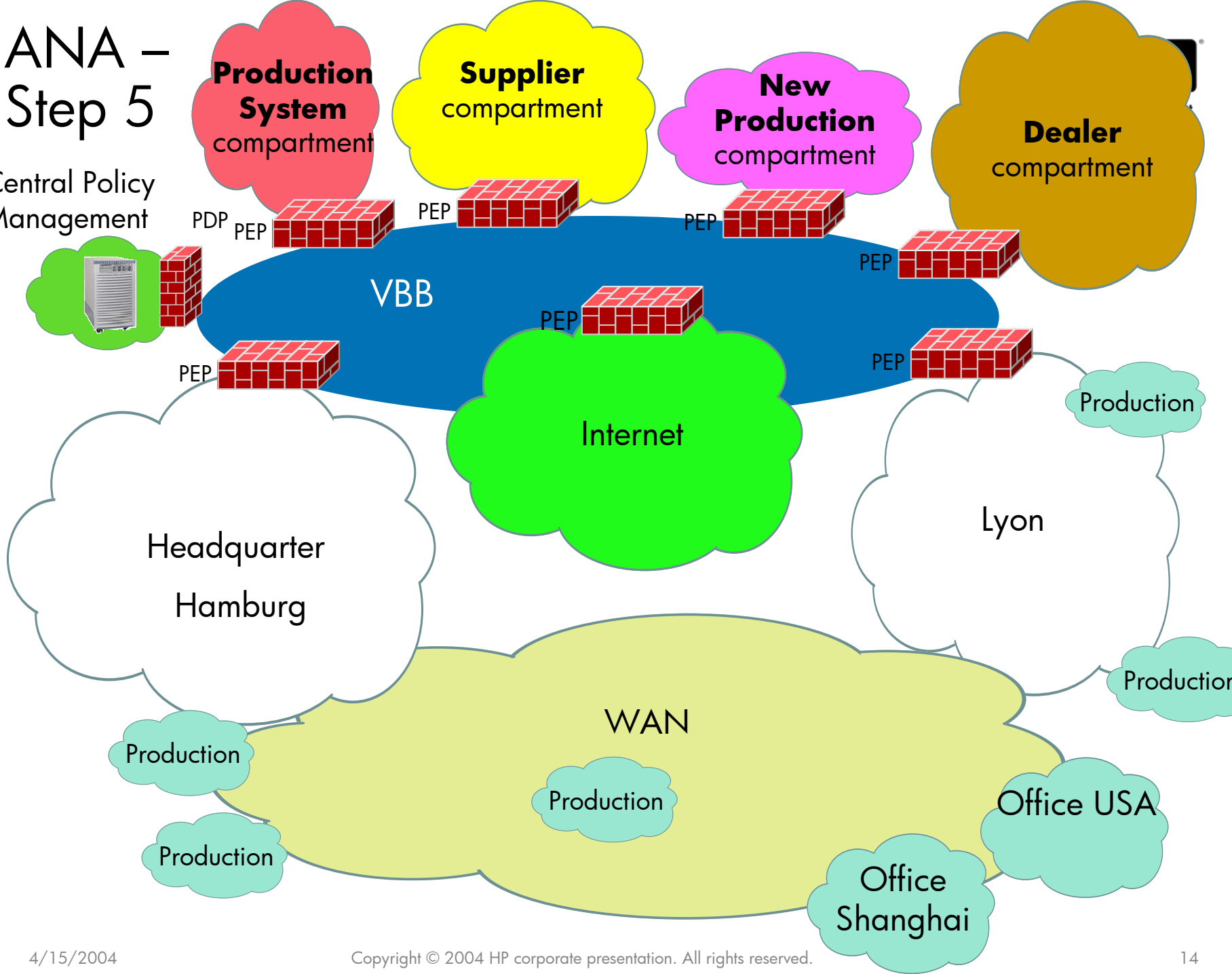
# ANA – Step 4

Central Policy Management

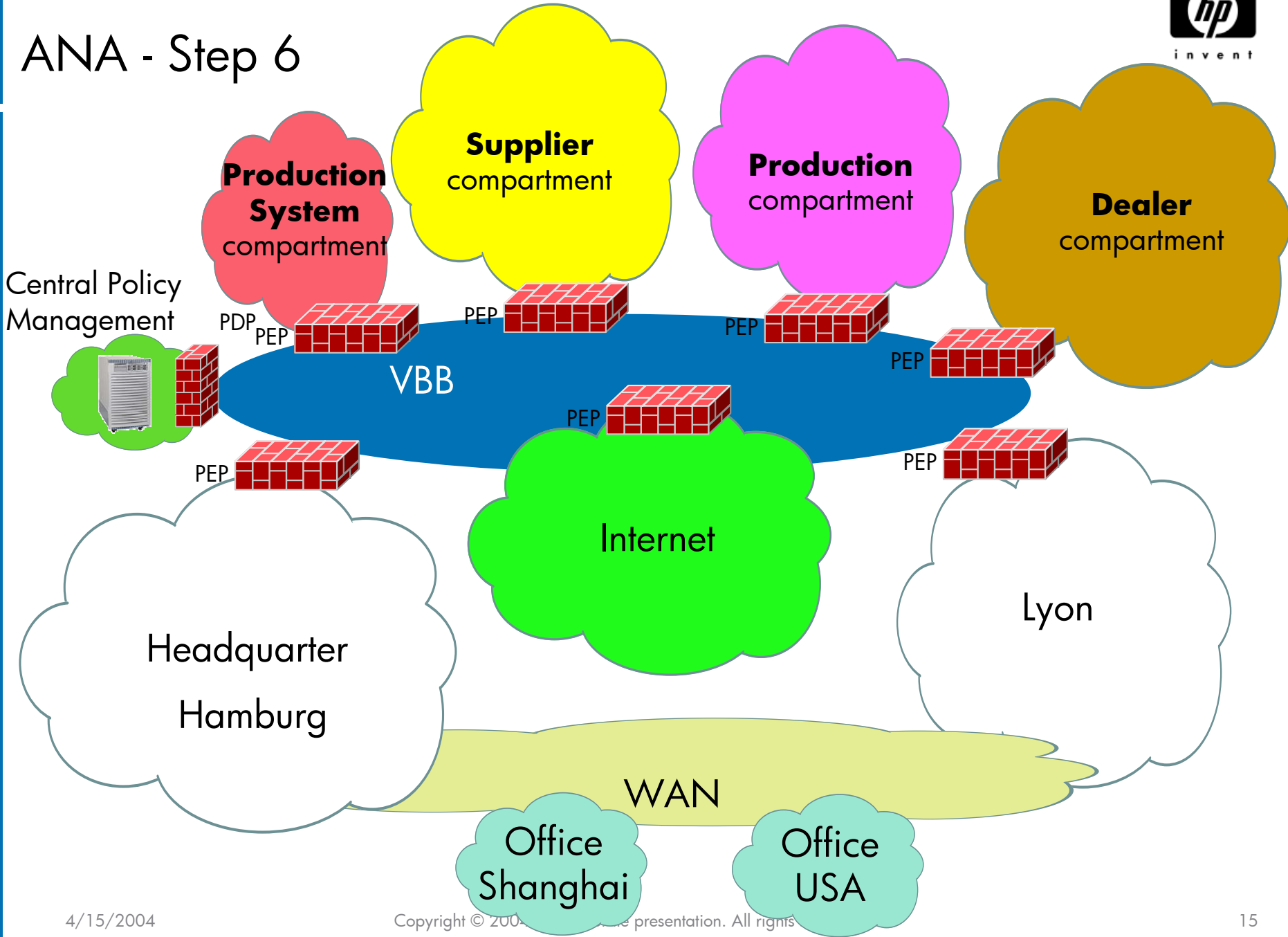


# ANA – Step 5

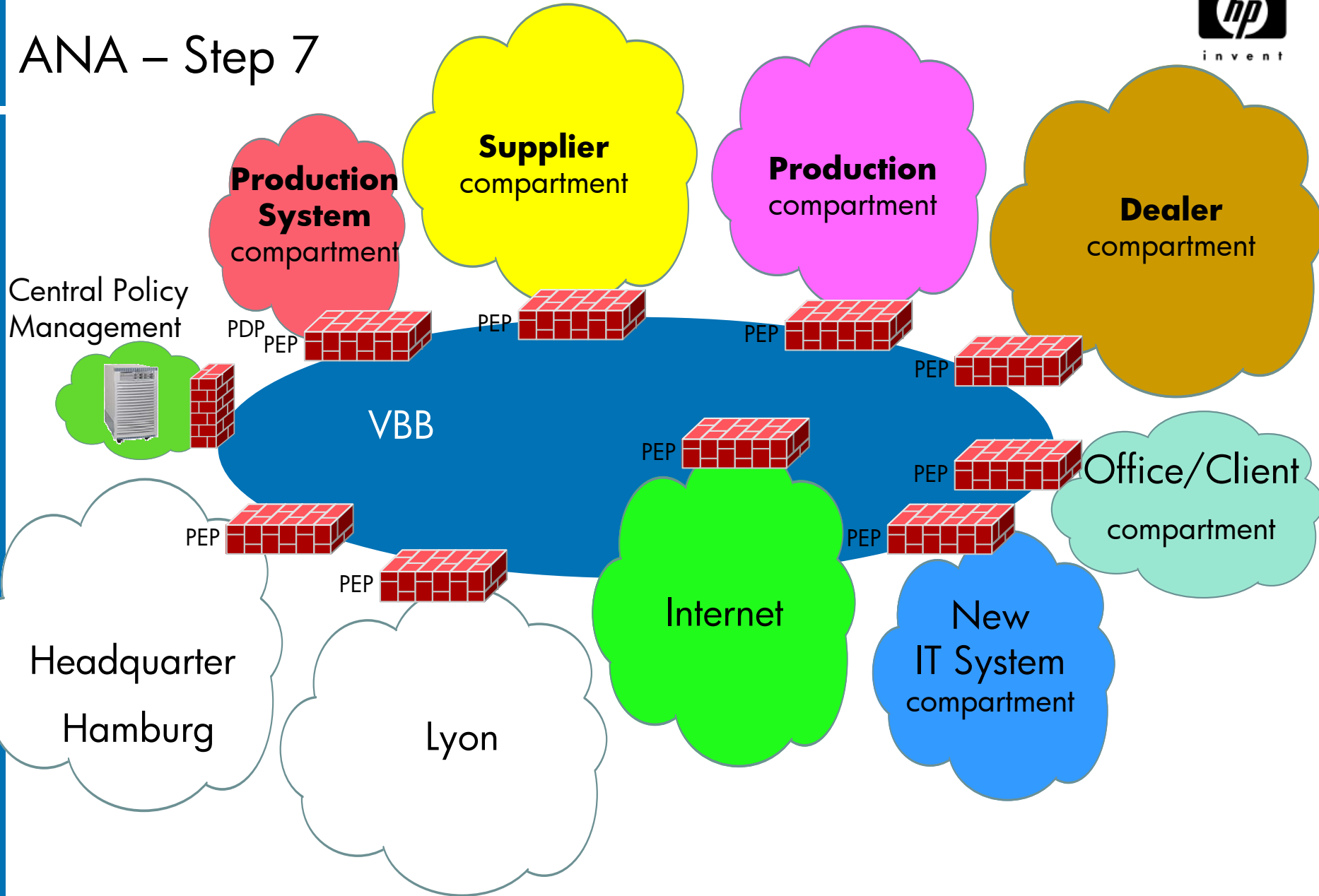
Central Policy Management



# ANA - Step 6

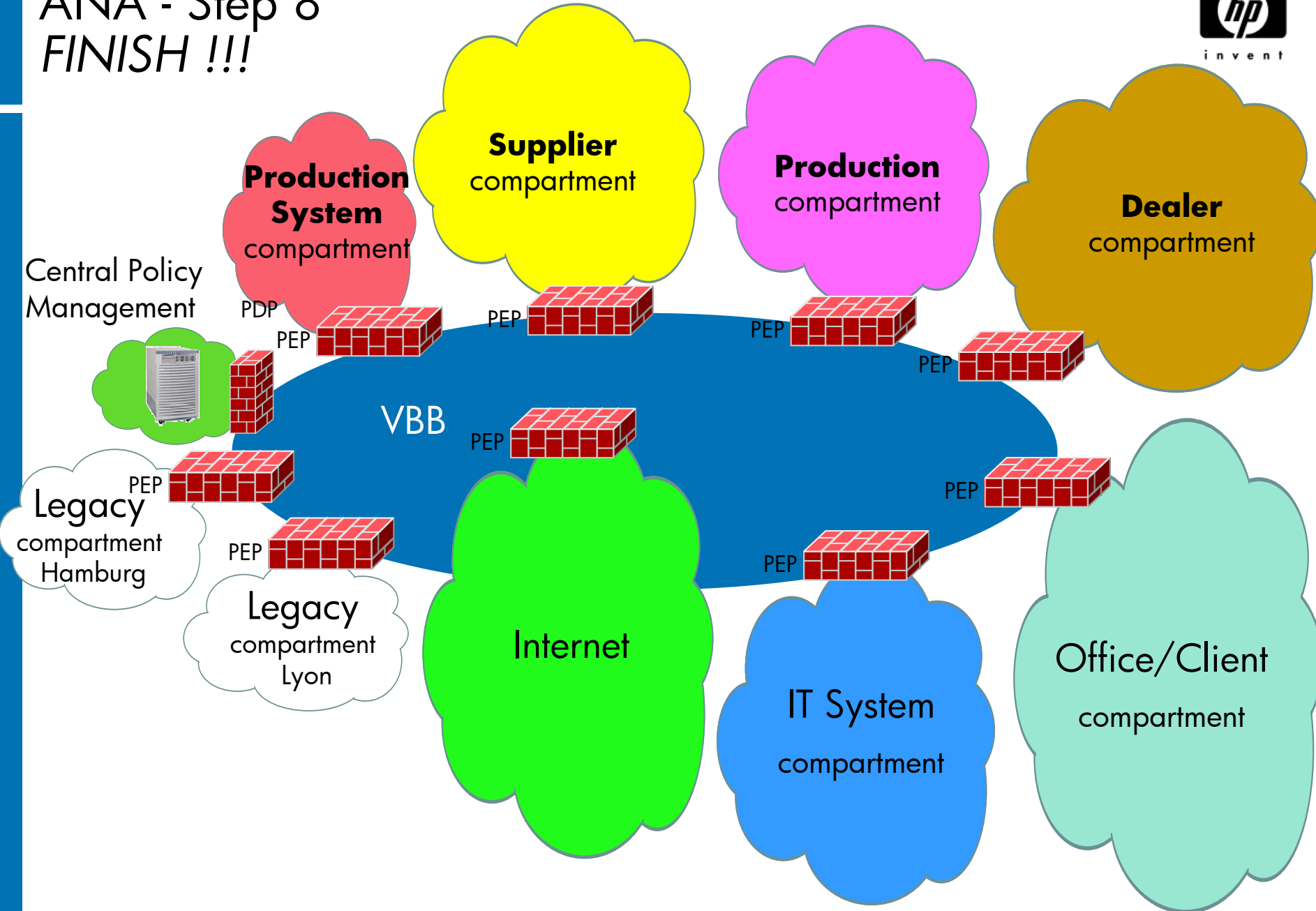


# ANA – Step 7

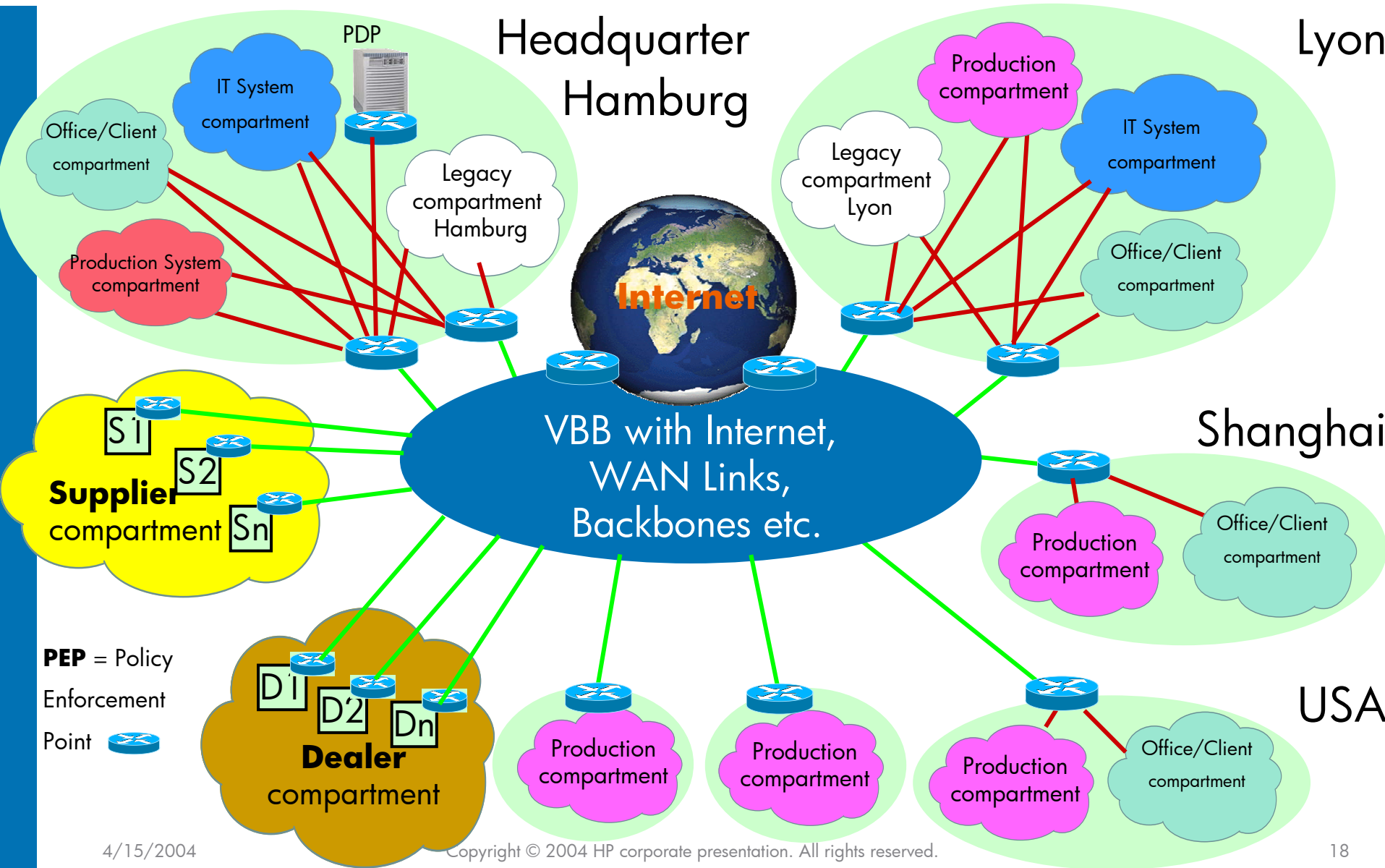





# ANA - Step 8 FINISH !!!



# New Corporate Network - with ANA



**PEP** = Policy Enforcement Point



# ANA Security Impact



# ANA and Security

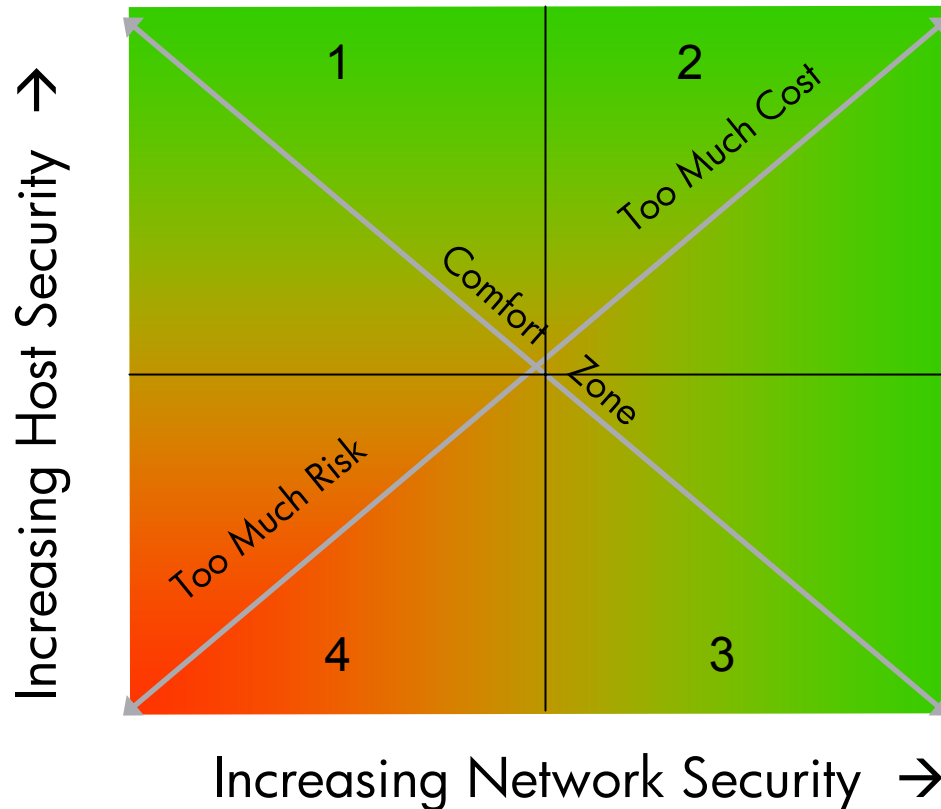
- ANA need a detail consideration of the business security aspects and requirements
- ANA is closely linked to Information Security (IS)
- Security needs a structured methodology
  - Could be based on the ISO 17799 or BS7799 standard
  - Local standards (Germany could use the BSI Basement Protection Manual and/or the ISO17799)
  - HP uses the best of it for ANA!
- Security is more than a Firewall or a Access-List

# Security Policy Matrix

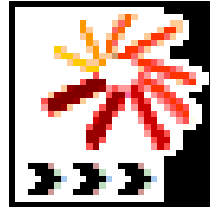
## Security implications



A fundamental principal of ANA is the balance between network, host, and application security



# HP's ANA & Cisco's IBNS Solution



ANA IBNS Flash

# ANA Benefits & References



# ANA – Tangible Benefits

- HP invest for ANA was only 66% of the annual savings which produced an ROI of 150%
- ANA improves productivity and it's measurement comes from:
  - better use of **time** and **range** of the support staff
  - faster **time to market**, **revenue** increase
  - better use of the **assets**, **CAPEX**, **savings**
  - better use of the **operational costs**, **OPEX**, **savings**
  - improved **security**, lower **downtime**, improved data consistency, **confidentiality** and privacy, **savings**



# HP Adaptive Network Architecture

## Measurable business benefits

**Time**

Speeds implementation of network changes and reorganization

+

**Range**

Enables deployment of new business models and reduces the complexity of the change

+

**Ease**

Simplifies deployment and integration of applications, services and network devices

**Implement through critical people and governance processes**



## Based on the Agility Design Principles

**Simplification**

Logical network architecture based on information needs rather than physical layout

+

**Standardization**

Centralized definition of distributed, enterprise-wide network domains

+

**Modularity**

Dynamic provisioning and management of the architecture elements

+

**Integration**

Pre-defined environments for integration of new applications, services or devices

# References

- HP and Compaq Merger
- HP divestiture of Agilent
- Samsung
- Procter and Gable
- HP Cleanrooms
- HP over 3 years successful internal experience

# ANA Summary



# HP's Adaptive Network Architecture (ANA) Summary



- ANA is a solution framework that improves the security, flexibility and cost effectiveness of Corporate IP networks.
- ANA delivers tangible benefits for the following Corporate business needs
  - Improved security strategy implementations (with/without IBNS)
  - Faster supplier/partner network access and tear-down
  - More efficient mergers, acquisitions, and divestitures
  - Effective network application introductions (e.g. IPT, IPV.6,....)
- ANA customer solutions are identified via a consultative workshop approach, and ROI cost/benefit justification
- ANA is part of HP's Adaptive Enterprise strategy, and is built around existing standard IP technology, enhanced by unique HP tools, processes & methodologies



i n v e n t

# ANA Addendum References



# Success story: HP and Compaq merger

## • Challenges

- take advantage of opportunities from internet-based business practices
- share data with extended workgroups (including partners from other companies)
- execute M&A and divestitures

## • Solutions

- an adaptive network architecture
- networks were re-engineered from the ground up
- US \$20M investment

## • Results

- \$30 million annual savings
  - reduced administration costs
  - lower operating expenses
  - shortened acquisition lead times
- time to integrate new partners into supply chain cut from 6 months to 2 weeks
- Five pending patents
- All employees integrated into the HP internal network on the first day of trading as HPQ

78,000 employees  
in 60 offices worldwide

**COMPAQ**

# Success story: HP Divestiture of Agilent Technologies



## • Challenges

- 1100 applications to “clone and go”
- transition from “internal” to customer
- concurrent divestiture from Agilent

## • Solutions

- an adaptive network architecture
- a “six-pack” routing and connectivity model for inter-enterprise connectivity
- US \$5M investment

## • Results

- managed six interconnected firewalls with a single consistent global policy
  - implemented changes daily
  - met the “day one” separation milestone with no adverse business impact
- Agilent divested a business unit to an HP competitor during it’s own divestiture
- global operational capability developed around the policy registry



**Agilent Technologies**

40,000 employees

in 120 offices worldwide



# Samsung Electronics



## Customer business challenge

- Maintain global leadership in fast-paced, ultra-competitive industry
- Improve efficiency and effectiveness of geographically dispersed operations
- Promote sharing of applications and services between subsidiaries

## Solution: Adaptive Network Architecture

- Executive workshop to determine business drivers, objectives & measures
- Security analysis of the existing environment
- Architecture, deployment and configuration of compartments around subsidiaries and datacenter hosting shared services

## Customer results/benefits

- Faster and easier integration of new locations or subsidiaries
- Higher availability of shared resources
- Centralized and unified security policies
- Cost reduction in management and security operations

# Success story: Procter & Gamble



## • Challenges

- need to lower costs, improve quality & design of IT operations
- managed 3 data centers, 2,000 computer servers, >80,000 desktops in 160 countries

## • Solutions

- HP Services will manage P&G's IT infrastructure, data center operations, desktop support, network management, applications development, worldwide maintenance support
- 1,850 P&G employees in 50 countries will move to HP Services

## • Results

- Expected cost savings of 10-15% through outsourcing
- \$300-500M total savings during 10 year contract

**P&G**

***"HP is an industry leader and will help us substantially lower costs and accelerate innovation throughout P&G."***

**Filippo Passerini  
Global Business Services Officer  
Procter & Gamble**

# HP implementation pays big dividends

- Consumer products group supply chain management
  - Time to add new partner reduced from 6 months to 2 week
  - Supply chain management integration costs reduced
- Verifone divestiture (1,500 employees, 20 offices worldwide)
  - Separated from HP internal network on the day of transaction close
  - Project implemented in man-hours instead of man-months (3 weeks for planning and implementation)

# Why HP?

- redefining the value of the network infrastructure for the business
- key enabling intellectual property— far in advance of any other infrastructure vendor
- tested and proven with successful large-scale deployments
- global reach and presence with the right skills

A horizontal bar divided into three colored segments: green on the left, orange in the middle, and blue on the right. The word 'People' is in white on the green segment, 'Process' is in white on the orange segment, and 'Technology' is in white on the blue segment. Large white plus signs are placed between the segments.

**People + Process + Technology**



i n v e n t